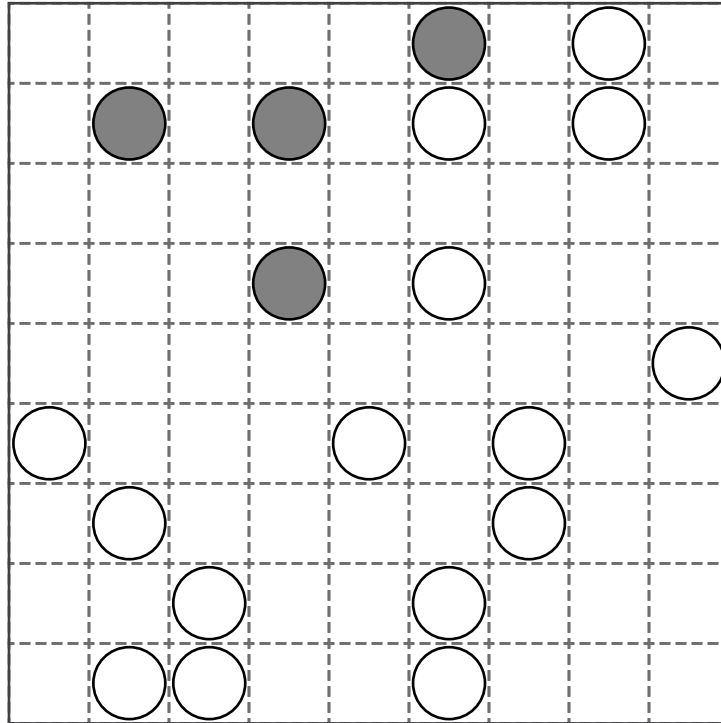


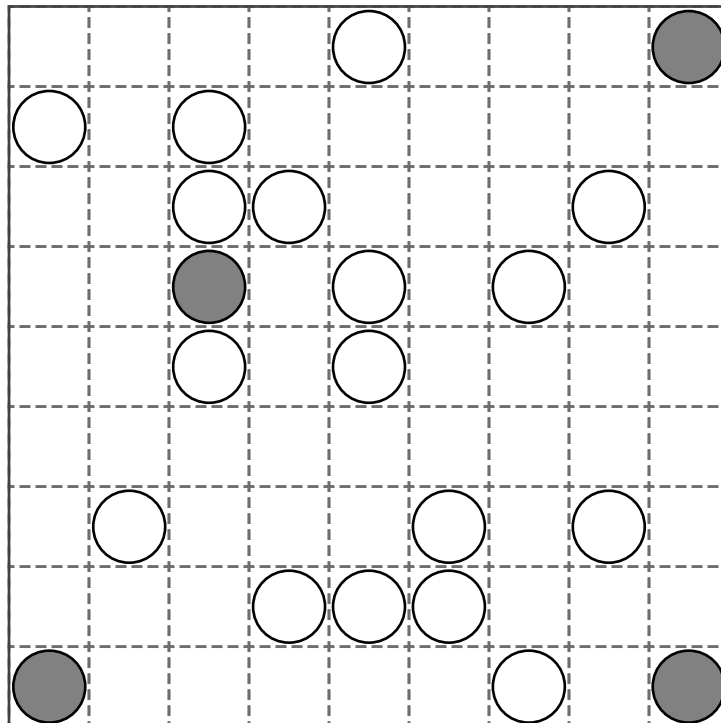
# PUZZLES and BRAINS

## 9 BY 9 MASYU (HARD NO. 39 AND 40)

DRAW A SINGLE CONTINUOUS LOOP THAT PASSES THROUGH ALL CIRCLES ONCE. THE LOOP MAY NOT CROSS ITSELF AND PASSES CIRCLES HORIZONTALLY OR VERTICALLY. YOU MUST PASS STRAIGHT THROUGH WHITE CIRCLES, BUT THE LOOP MUST MAKE A 90 DEGREE TURN IN THE NEXT CELL OR THE CELL BEFORE. IN DARK CIRCLES THE LOOPS MUST MAKE A 90 DEGREE TURN, BUT MUST PASS STRAIGHT THROUGH THE NEXT CELL OR THE ONE BEFORE.

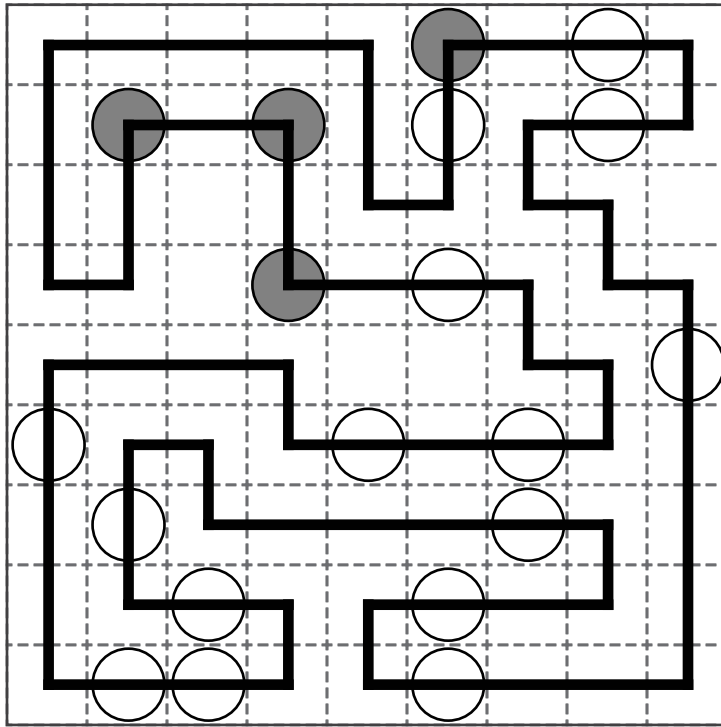


0909 MASYU HARD 39

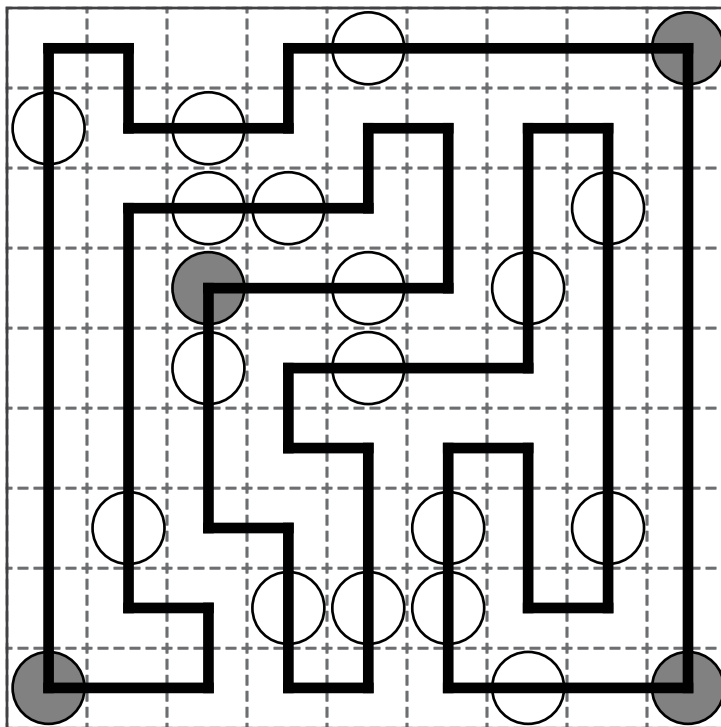


0909 MASYU HARD 40

# ANSWERS



0909 MASYU HARD 39



0909 MASYU HARD 40